

ANCIENT ARCHITECTURE. INTERNATIONAL COLLABORATION. UNMATCHED OPPORTUNITY.

The ancient temple complex in Luxor, Egypt, was begun some 3,600 years ago. It has been expanded countless times in the ensuing millennia by such titanic figures as Ramses II, Tutankhamen and Alexander the Great. Now the names of Clemson students in planning and landscape architecture will be added to that ancient roster.

As part of an ambitious push to restore and rejuvenate the area, government officials from Luxor invited students from Clemson University to join Egyptian students from Ain Shams University in Cairo in 2006 to collaborate on a master plan for the city. The goal was to help alleviate the unplanned urban sprawl threatening the integrity of the area's temples and Avenue of Sphinxes.

"It's very exciting to think that some of this work will be implemented in the years to come," says Hala Nassar, Clemson professor of landscape architecture, "but it's also very important to remember that it was a tremendous honor to be invited to participate in the plan itself."

Leading Facilities

Keeping Clemson's design and building disciplines among the eminent programs of the world will not only benefit our University through international recognition, it will also bring exceptional opportunities such as this to our students, and it will prepare our graduates to continue to lead innovative design and building efforts in the future.

With a thriving and evolving marketplace focused on increasing environmental, health, geographical and spatial concerns, graduates in these fields are in high demand. Meeting this demand will require adequate space for Clemson's design and building disciplines to grow and thrive. To this end, Clemson is commencing a renovation and expansion project that will create a design and building complex worthy of our students, teachers and industry partners.





The Reality

Success in the design and building disciplines requires students to learn through a creative process of risk-taking and dialogue. This process moves students and faculty beyond the traditional classrooms and offices. Studios and galleries, spaces for design charrettes and library collections, and cutting-edge technology and equipment are essential for achieving distinction.

Yet, as Clemson's design and building disciplines have grown and multiplied over the years, their physical home — the 50-year-old Lee Hall — has fallen far behind in providing adequate space for its inhabitants. Today, Lee Hall's 72,000 net assignable square feet is half the amount of space needed for the design and building disciplines to function successfully. Underscoring the urgency of the proposed expansion are the disciplines' accreditation board reviews, several of which have cited the current facilities as a deficiency that must be addressed.



The Need

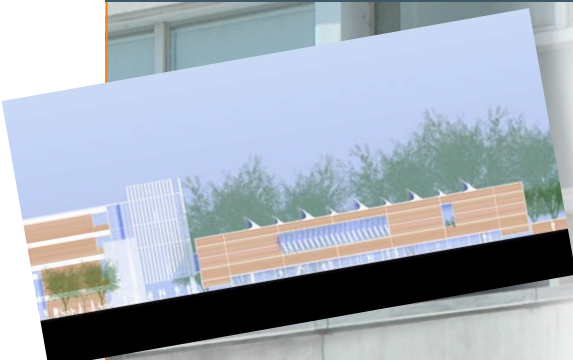
Clemson's proposed design and building complex will be a first-class facility to accommodate the architecture, planning and landscape architecture, and construction science and management departments, and temporarily house the visual arts department. One of our top building priorities on campus, this renovation and expansion will nearly double the space available in the current Lee Hall. However, fulfilling this goal will require Clemson to raise millions in private investments.



The Impact

By creating additional classroom and studio space, the design and building departments will have the necessary facilities to offer smaller class and studio sizes, thereby serving students better and helping the University on its quest to become a top-20 public university. Most importantly, expanding Lee Hall will allow Clemson to:

- Accommodate current students and staff.
- Increase enrollment in response to market demands.
- Address the facility-related concerns of our accreditation boards.
- Add new programs of study.
- Continue on that path of excellence indicative of a top-20 university.



GENEROUS DONORS. UNIVERSITY LEADERS. NAMING OPPORTUNITIES.

Clemson is grateful for the support of our alumni, friends and corporate partners, without whom we could not complete the Lee Hall project. In recognition of our most generous donors, the University is offering the following naming opportunities:

New Building Naming	\$5,500,000
New Courtyard	\$1,500,000
New Building Floors	\$1,000,000
Renovated Master of Real Estate Development and Center for Real Estate Development Floors	\$500,000
Renovated Auditorium	\$500,000
Studios	\$150,000 - \$250,000
Classrooms	\$75,000 - \$125,000
Renovated Review Alcoves	\$75,000 - \$125,000
New Faculty/Staff Lounge	\$50,000
Renovated Department Chair Office	\$50,000
Renovated Studio Common Space	\$50,000
Common Space	
Renovated	\$25,000
New	\$30,000
War Rooms/Seminar Rooms	
Renovated	\$25,000
New	\$35,000
Office	
Renovated	\$15,000
New	\$25,000

Lee Hall Alumni Bulet

The Clemson Advancement Foundation
for Design + Building

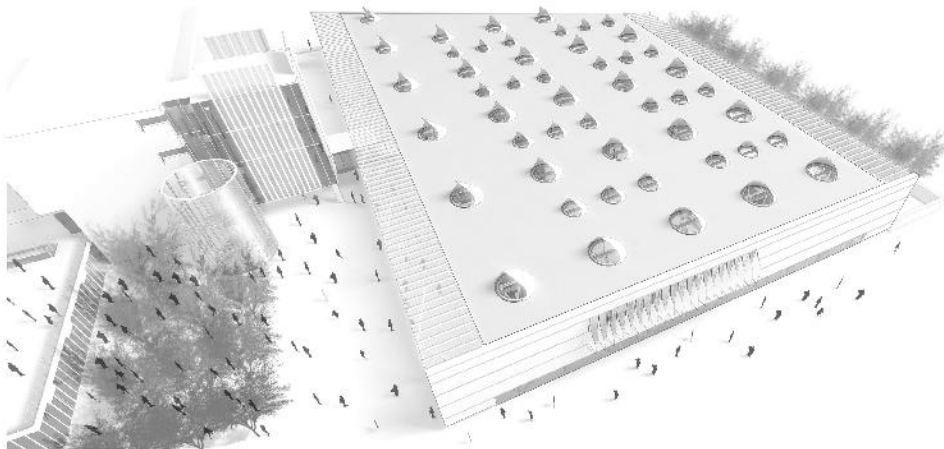


Lee Hall Restoration, Renovation and Expansion

Architects from McMillan Pazdan Smith will meet in October with faculty and administrators from all disciplines in Lee Hall to resolve remaining design issues prior to the next round of working plans. The team is also hard at work right now on the expansion's geothermal and solar energy systems.

Hear lead architect Thomas Phifer and President Jim Barker talk about the design:

<http://www.youtube.com/watch?v=McqtmwdPjxk>



SEED Project Featured at IABR

If you've noticed the colorful shipping container behind Lee Hall, with its associated landscaping, then you've seen Clemson's SEED Project, a research project in disaster-response housing led by faculty members Pernille Christensen of landscape architecture, with Douglas Hecker and Martha Skinner of architecture.

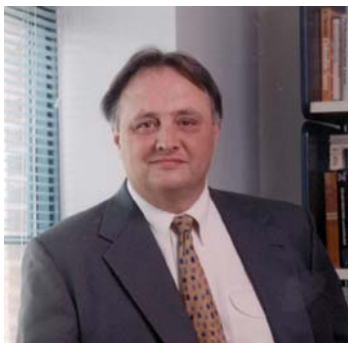
Clemson SEED research was featured at the 4th International Architecture Biennale Rotterdam's exhibit "Parallel Cases," which opened last week at the Netherlands Architecture Institute.

To learn more about SEED, watch the video interview with Christensen:

<http://www.clemson.edu/newsroom/multimedia/video/2009/july>



In Memory of James A. (Jim) Binger, AIA



On September 20, 2009, The Clemson Advancement Foundation lost one of its board members. Jim Binger, who was the immediate past president of the CAF, was well known for shaping the direction of the wellness industry. With more than thirty years experience, Jim brought unique expertise and a passion for wellness that was contagious. The CAF is grateful for Jim's steadfast service to The School of Design + Building. He will be dearly missed.

Clemson announces First Endowed Faculty Chair in Construction Science and Management

Dennis Bausman, associate professor in Clemson University's construction science and management department, has been named its first Endowed Faculty Chair in Construction Science and Management. Read the full release:

http://www.clemson.edu/media-relations/article.php?article_id=2235

Lee Hall Events

Lee Gallery Events

Through November 12

Department of Art Faculty Exhibition:

Biennial exhibition featuring the art faculty's most recent explorations and finely-crafted productions. Included this year: Syd Cross, David Detrich, David Donar, Sue Grier, Lynette House, Christina Hung, Heidi Jensen, Todd McDonald, Joey Manson, Mike Vatalaro, Denise Woodward-Detrich and Anderson Wrangle

Lunchtime gallery talks at 12:15 p.m.:

October 15 - Syd Cross, Todd McDonald, Anderson Wrangle

October 23 - Joey Manson, Mike Vatalaro

October 15

Visiting Artist Lecture: Soundings by Timothy Nohe

Room 100, Lee Hall at 5 p.m.

Non-traditional photographic installation, accompanied by an audio composition, explores the human use of Botany Bay, New South Wales, Australia.

October 23

Center for Visual Arts Open House/Open Studios:

Department of Art studios and Lee Gallery 10 a.m. - 4 p.m.

All graduate and undergrad studios in Lee and Freeman are open to the public. Come get your hands dirty or just watch.

For details on Lee Gallery exhibitions, <http://www.clemson.edu/caah/leegallery/>

19th Annual Clemson University Constructors Guild Contractor/Student Golf Tournament

Friday, October 23, 2009

Walker Golf Course; shotgun start at 1:30 p.m.

Contact Deborah Anthony for information (864-656-0181 or adebora@clemson.edu)

5th Anniversary Celebration of the Master of Real Estate Development

If you are a Clemson alumnus or alumna working in the real estate profession, we invite you to join in the celebration of the fifth anniversary of the Master of Real Estate Development program on Friday, October 16 from 6-9 p.m. in the ballrooms of the Clyde V. Madren Center. Expand your Clemson network and connect with old friends during this very special evening to kick off the formation of the Clemson University Real Estate Alumni Society.

Please reply by email to Marjorie Putnam at Marge@Clemson.edu no later than Friday, October 9.

What is the CAF?

The Clemson Advancement Foundation for Design + Building (CAF) was created in 1956 out of strong desire by the design and building professions to enhance the quality of our built environment through a partnership with Clemson University's School of Design + Building and the Department of Art.

CAF-sponsored programs ensure the margin of excellence for the students and faculty of Lee Hall and include, but are not limited to, the following: student scholarships and fellowships, technology and equipment, field trips, off-campus programs in Genoa, Barcelona, Charleston and beyond, Lee Hall exhibitions, and the CAF Lecture Series.

To learn more about the CAF, view our members, learn how to become a member, or to make a gift please visit our website at www.clemson.edu/caf/ or email LeRoy Adams, Executive Director, at ladams@clemson.edu.



[Forward email](#)

[SafeUnsubscribe®](#)

This email was sent to ladams@clemson.edu by dbozard@clemson.edu.
[Update Profile/Email Address](#) | Instant removal with [SafeUnsubscribe™](#) | [Privacy Policy](#).

Email Marketing by



Clemson Advancement Foundation | Box 340502 | 150 Lee Hall | Clemson | SC | 29634